



Belong  
Better Together  
Succeed  
Serve

# 2022-2023 ANNUAL REPORT

School District of Holmen



# TABLE OF CONTENTS



**03** Our School Board

---

**04** Vision/Mission/Strategic Plan

---

**05** Superintendent's Message

---

**06** District Profile

---

**07** Our Schools

---

**08** Highlights

---

**11** Celebrating Our Staff

---

**13** Our Graduates



# OUR SCHOOL BOARD



Jennifer Dieck



Chris Lau



Barb Wuensch



Maggie Smith

*Thank You*

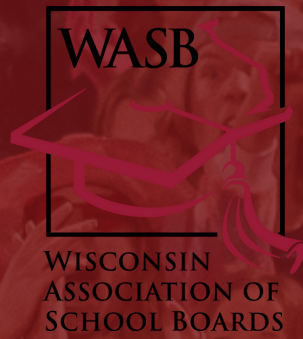
HOLMEN SCHOOL BOARD OF EDUCATION



Bridget Todd-Robbins



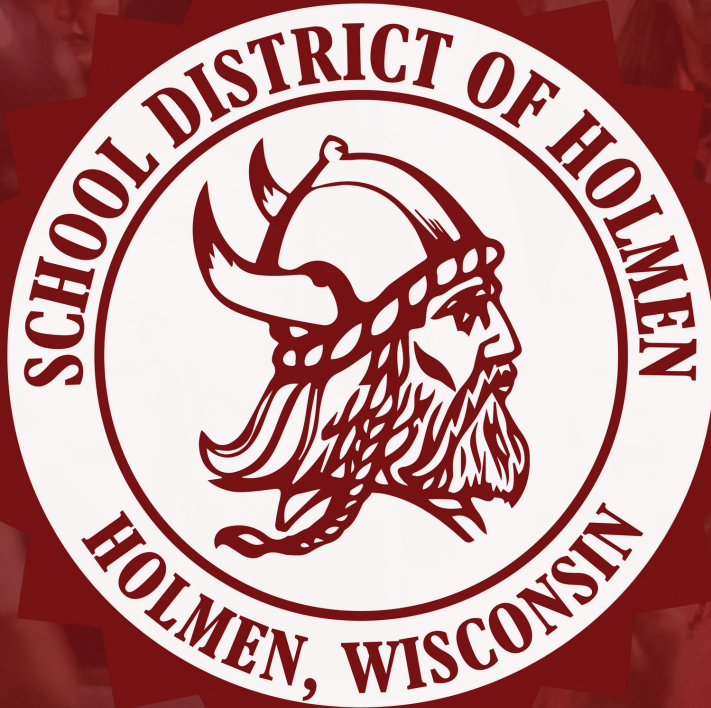
Khadijah Islam



Lindsay Nied



Krystal Lee  
(Student Rep)



Unless otherwise posted, all Board meetings are held the second and fourth Mondays of each month at 7:00 p.m. at the School District of Holmen District Office's Board Room (1019 McHugh Rd, Holmen, WI). The agendas are available on our website [www.holmen.k12.wi.us](http://www.holmen.k12.wi.us) and live broadcasts are available through YouTube at <https://www.youtube.com/@SDHolmen>

# OUR VISION

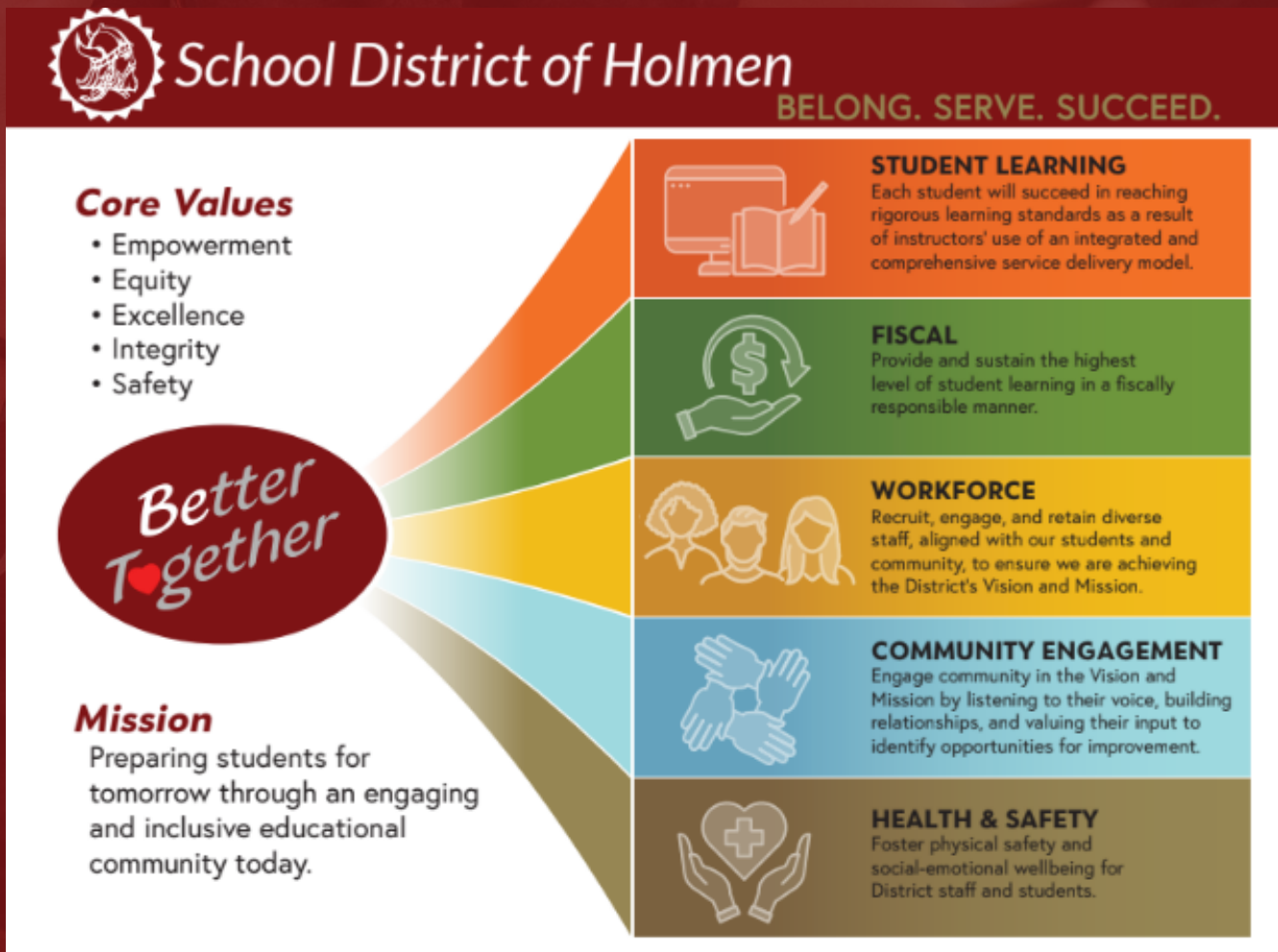
The vision of the School District is  
"Belong. Serve. Succeed."



# OUR MISSION

We strongly believe in our mission which is, "Preparing students for tomorrow through an engaging and inclusive educational community today." Our core values of empowerment, equity, excellence, integrity, and safety guide us in our decision-making.

# STRATEGIC PLAN:



# Superintendent's Message



**Dr. Kristin Mueller**

It is an honor to work alongside incredible people who make the School District of Holmen a great place to learn. I am grateful for all the heartfelt dedication and commitment to the continual growth of our students. Our students not only grew academically, but with each other as we continued to focus on reconnecting and building positive relationships with one another.

I am continually grateful to lead this dynamic school district. Whether you are a student, a family member, or part of the team, you inspire me every day.

I extend my deepest gratitude to our dedicated teachers, supportive parents, diligent staff, and engaged community members for their unwavering commitment to our district's mission. Together, we are making a profound difference in the lives of our students and preparing them for success in an ever-evolving world.

Thank you for your continued trust and support. I look forward to another year of growth, achievement, and collaboration as we build an even stronger foundation for our students' success.

*Kristin A. Mueller*



## NOVEMBER 8, 2022 | REFERENDUMS

**BUILDING IMPROVEMENTS**

**EFFICIENCY UPGRADES**

**MODERN LEARNING**

**HEALTH & SAFETY**

**NOVEMBER 8, 2022 | REFERENDUMS**

**MIDDLE SCHOOL CONCEPTUAL PLANS**

**WHAT IS INCLUDED IN THE MIDDLE SCHOOL PLAN?**

- BUILDING IMPROVEMENTS**
  - CABINETS, LOCKERS, DOORS, AND STORAGE EQUIPMENT UPGRADES
  - BUILDING EXTERIOR/SIDING, ELECTRICAL, HEATING/COOLING UPGRADES
  - WITCHON/CARTERS REBUILD
- EFFICIENCY UPGRADES**
  - LED LIGHTING UPGRADES FOR BETTER LIGHTING AND REDUCED UTILITY COSTS
  - HVAC AND PLUMBING UPGRADES
- MODERN LEARNING**
  - LIBRARY MEDIA CENTER (LMC) AND CLASSROOM RENOVATIONS INCLUDING FLEXIBLE FURNITURE
  - CLASSROOM REBUILD TO REPLACE THIS SERVICE
  - CLASSROOMS, TECH ED, MUSIC, BAND AND OTHER RENOVATIONS INCLUDING FLEXIBLE FURNITURE
- HEALTH & SAFETY**
  - VENTILATION UPGRADES AND ENVIRONMENTAL REMEDIATION
  - BURNING AND TRAFFIC FLOW IMPROVEMENTS
  - FIRE ALARM SYSTEM UPGRADES
  - EMERGENCY EVACUATION ROUTES
  - AMERICANS WITH DISABILITIES ACT (ADA) UPGRADES

**NOVEMBER 8, 2022 | REFERENDUMS**

**EVERGREEN ELEMENTARY CONCEPTUAL PLANS**

**WHAT IS INCLUDED IN THE EVERGREEN ELEMENTARY PLAN?**

- BUILDING IMPROVEMENTS**
  - CABINETS, COUNTERS, DOORS, AND STORAGE EQUIPMENT UPGRADES
  - BUILDING EXTERIOR/SIDING, ELECTRICAL, HEATING/COOLING UPGRADES
  - ELEVATOR UPGRADES
  - WITCHON/CARTERS ADDITION
- EFFICIENCY UPGRADES**
  - LED LIGHTING UPGRADES FOR BETTER LIGHTING AND REDUCED UTILITY COSTS
  - HVAC AND PLUMBING UPGRADES
- MODERN LEARNING**
  - LIBRARY MEDIA CENTER (LMC) AND CLASSROOM RENOVATIONS INCLUDING FLEXIBLE FURNITURE
  - NEW STUDIOS/SCIENCE, TECHNOLOGY, ENGINEERING, AND ARTS LAB
- HEALTH & SAFETY**
  - VENTILATION UPGRADES AND ENVIRONMENTAL REMEDIATION
  - BURNING AND TRAFFIC FLOW IMPROVEMENTS
  - FIRE ALARM SYSTEM UPGRADES
  - AMERICANS WITH DISABILITIES ACT (ADA) UPGRADES

**NOVEMBER 8, 2022 | REFERENDUMS**

**VIKING ELEMENTARY CONCEPTUAL PLANS**

**WHAT IS INCLUDED IN THE VIKING ELEMENTARY PLAN?**

- BUILDING IMPROVEMENTS**
  - CABINETS, COUNTERS, DOORS, AND STORAGE EQUIPMENT UPGRADES
  - BUILDING EXTERIOR/SIDING, ELECTRICAL, HEATING/COOLING UPGRADES
  - ELEVATOR UPGRADES
  - WITCHON/CARTERS REBUILD
- EFFICIENCY UPGRADES**
  - LED LIGHTING UPGRADES FOR BETTER LIGHTING AND REDUCED UTILITY COSTS
  - HVAC AND PLUMBING UPGRADES
- MODERN LEARNING**
  - LIBRARY MEDIA CENTER (LMC) AND CLASSROOM RENOVATIONS INCLUDING FLEXIBLE FURNITURE
  - NEW STUDIOS/SCIENCE, TECHNOLOGY, ENGINEERING, AND ARTS LAB
- HEALTH & SAFETY**
  - VENTILATION UPGRADES AND ENVIRONMENTAL REMEDIATION
  - BURNING AND TRAFFIC FLOW IMPROVEMENTS
  - FIRE ALARM SYSTEM UPGRADES
  - AMERICANS WITH DISABILITIES ACT (ADA) UPGRADES



# District Profile



# 3,879 STUDENTS

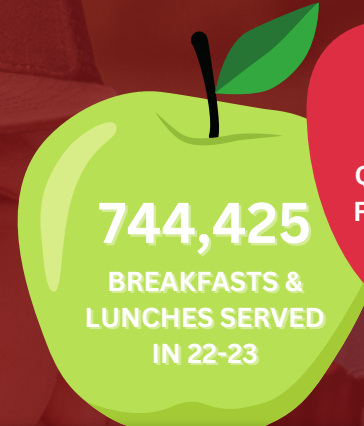
HOLMEN is the

# 44th

## largest district

OUT OF 421 PUBLIC SCHOOL DISTRICTS IN WISCONSIN

- 3.7 % MULTILINGUAL LEARNERS
- 25.2 % ECONOMICALLY DISADVANTAGED
- 13.8 % STUDENTS WITH DISABILITIES



SOURCE: DPI

## DISTRICT EMPLOYEES

## TEACHER STATISTICS

# 355

CERTIFIED STAFF

# 11

AVERAGE YEARS OF HOLMEN TEACHING EXPERIENCE

# 262

SUPPORT STAFF



# 14

NATIONAL BOARD CERTIFIED TEACHERS

# 27

ADMINISTRATION

# 254

TEACHERS WITH AT LEAST A MASTERS DEGREE



# 3,000

STUDENTS RIDING DAILY

# 500K

TOTAL MILES DRIVEN IN 2022-2023



# Our Schools



## NAME

## ADDRESS

## PRINCIPAL(S)



**Holmen High School**

**Enrollment: 1,212**

**1001 McHugh Rd,  
Holmen, WI 54636**

**Wayne Sackett  
Nick Bakke  
Ben Johrendt**



**Holmen Middle School**

**Enrollment: 892**

**502 N Main St,  
Holmen, WI 54636**

**Ryan Vogler  
Ben Tashner  
Sarah Thompson**



**Evergreen Elementary School**

**Enrollment: 342**

**510 Long Coulee Rd,  
Holmen, WI 54636**

**Rachel Fawver**



**Viking Elementary School**

**Enrollment: 384**

**500 E Wall St,  
Holmen, WI 54636**

**Bonnie Striegel\***  
  
**\*Nina Swanson  
beginning 23-24**



**Sand Lake Elementary School**

**Enrollment: 388**

**3600 Sand Lake Road,  
Holmen, WI 54636**

**Matt Meyers**



**Prairie View Elementary School**

**Enrollment: 463**

**1201 Newport Ln,  
Holmen, WI 54636**

**Nick Weber**



**Holmen Public Preschool/4k**

**Enrollment: 198**  
**(4k): 177**  
**Early Childhood: 21**

**500 E Wall St,  
Holmen, WI 54636**

**Sue Eitland**



# 22-23 Highlights



Prairie View Elementary was named as a BLUE RIBBON SCHOOL by the U.S. Department of Education!

The coveted National Blue Ribbon School award affirms the hard work of students, educators, families, and communities in creating safe and welcoming schools where students master challenging and engaging content.

Prairie View was recognized as a High Achieving school. Prairie View was 1 of 8 elementary schools recognized in the State of Wisconsin



**MODEL  
PLC at WORK®  
SCHOOL**



Viking Elementary was named a Model Professional Learning Community (PLC) At Work!

Out of about 500 schools and districts in the US and Canada to receive this honor, Viking Elementary was one of just six elementary schools in Wisconsin to be recognized as a PLC At Work!

We believe that ongoing, job-embedded learning for our educators is key to improving student learning. This recognition is a testament to the hard work and dedication of our amazing staff, who have worked tirelessly to build a collaborative culture focused on results and student success.

We want to extend our heartfelt thanks to all of the educators, staff, and students at Viking Elementary who made this achievement possible. This was truly a team effort and we are so grateful for the opportunity to be part of such an incredible learning community.





# 22-23 Athletic Highlights



Holmen Dance Team State Bound



Holmen Girls Cross Country State Bound



Holmen Volleyball Regional Champions



Holmen Boys Soccer Regional Champions



Holmen Boys Golf Qualifies for State



Jadyn Roden & Lydia Lazarescu  
State Track & Field Medalists



Holmen State Special Olympics



7 Wrestlers Qualify for the  
2023 WIAA Individual State Tournament



# More 22-23 Highlights



**Holmen Middle School  
State Spelling Bee Participants**



**Jake Anderson & Ben Strupp Top Tech  
Challenge - 2nd Place**



**Holmen High School Band Takes Home Twelve  
Awards At The 2022 ReliQuest Bowl**



**Holmen Middle School 8th Grader Avery Schmitt  
Advances To Nationals for National History Day**



**Holmen DECA Qualifies 18 individuals to advance  
onto the International Conference**



**Holmen Middle School Noetic Learning  
Math Contest winners**



# Celebrating Our Employees



**Congratulations to Mrs. Heather Breske on her remarkable achievement! Mrs. Breske was selected as a 2023 Herb Kohl Fellowship Recipient for her superior ability to inspire love of learning in students, leadership and service within and outside the classroom, and the ability to motivate others!**

**Congratulations to Holmen High School's Donah Callaway for being selected as WKBT News 8's February Top Notch Teacher!**

**Mrs. Callaway was chosen for her sense of compassion, energy, and her sense of humor.**



**Mrs. Robin George of Sand Lake Elementary was chosen as one of the 2023 Junior Achievement Teachers of the Year!**

**Prairie View Elementary's Maggie Hubbard was chosen as the General Mills "Trayblazer" which is a national recognition for school nutrition professionals who are thinking big and taking action!**

**Maggie is the Nutrition Team Leader at Prairie View and she embraces challenges and has found plenty of ways to pivot and excel while always putting her students first.**



# Celebrating Our Employees



The School District of Holmen’s Travis Judell was recognized at the state and national level by the Wisconsin School Public Relations Association (WSPRA) & The National School Public Relations Association (NSPRA) for Outstanding School Communications!

- WSPRA Video Series Award of Excellence: CTE Month
- WSPRA Video Series School Award of Excellence: Kids Talk
- WSPRA Video Short Award of Excellence: Holmen High School Ninja Warrior Course
- NSPRA Video Award of Excellence: Holmen High School Youth Apprenticeship - Hayle Dayton
- NSPRA Video Award of Merit: Holmen High School Football Boot Camp
- 2022 WSPRA George Tipler Scholarship Recipient

Mr. Judell was also honored with a Telly Award. The Telly Awards, with over 13,000 entries from all 50 states and 5 continents, recognize excellence in video and television across various industries.



The School District of Holmen was honored with the 2023 Safety, Security, & Wellness Award by the Wisconsin Association of School Business Officials (WASBO) and M3 Insurance!



# OUR GRADUATES

YOU CAN FIND OUR 2023 GRADUATES AT:



17



Colorado State University

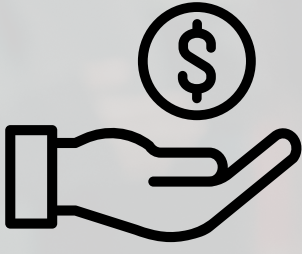


MONTANA STATE UNIVERSITY

Western



Student-Athletes Headed To Play College Sports



57 SCHOLARSHIP RECIPIENTS!  
\$166,400 Awarded



ALUMNI SPOTLIGHT:  
RYAN CHAPMAN

Ryan J. Chapman, is a 2016 Holmen High School graduate, who went on to graduate at the top of his class from the United States Naval Academy. During his time as a Midshipman, Ryan served as the Brigade Commander, the highest ranking midshipman charged with leading more than 4,400 students who make up the Brigade of Midshipmen. Additionally, Ryan ran marathons and ultramarathons for the Academy, including the Boston Marathon and John F. Kennedy 50 Miler, where he was part of the Kennedy Cup winning team. Before receiving an appointment to the Naval Academy on his second attempt, Ryan enlisted in the Wisconsin Army National Guard and studied Biomedical Engineering at Marquette University for one year on the Minuteman Scholarship. Most recently, Ryan received the prestigious FitzGerald Scholarship to study at the University of Oxford in England.



To See All Alumni Spotlights:

FOLLOW US





**FOLLOW US**



on Facebook @holmenschools



on Instagram @holmenschooldistrict



on YouTube @SDHolmen

# SCAN ME



For Full Annual Report Supplement please scan the QR Code above.

