

Project Update – High School Additions & Remodeling

School District of Holmen

Holmen, Wisconsin

6.10.19

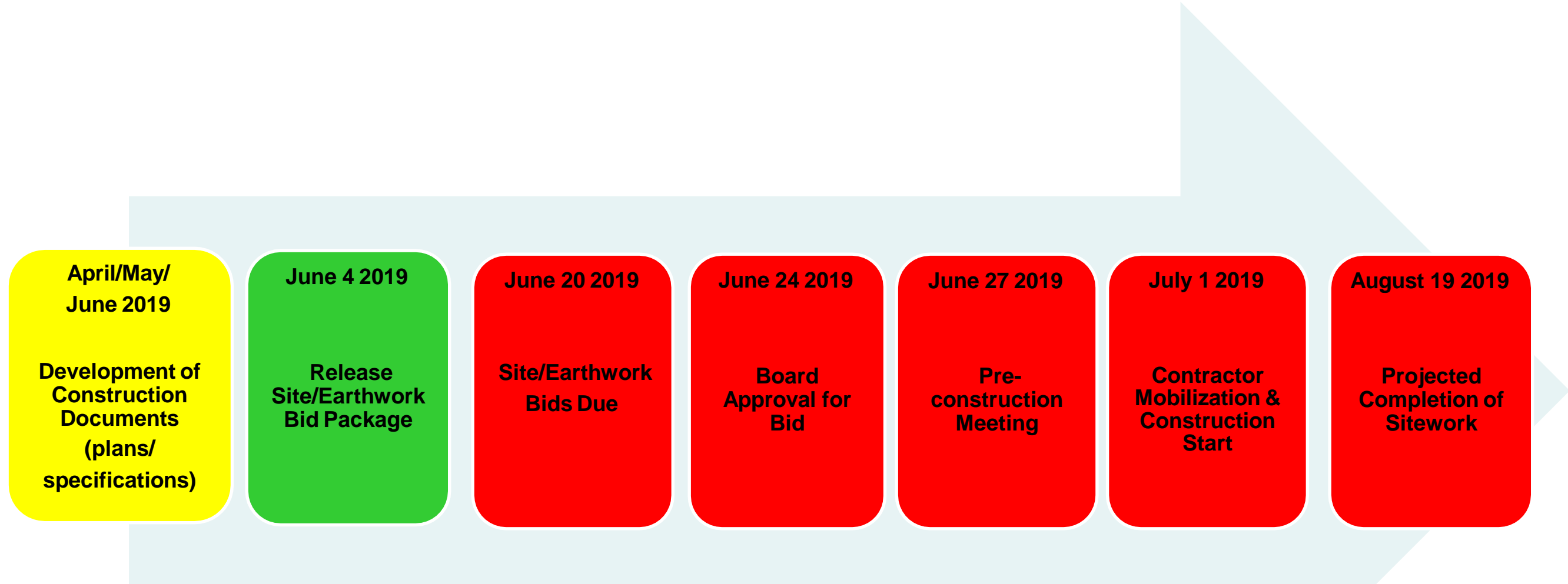


High School Additions & Remodeling

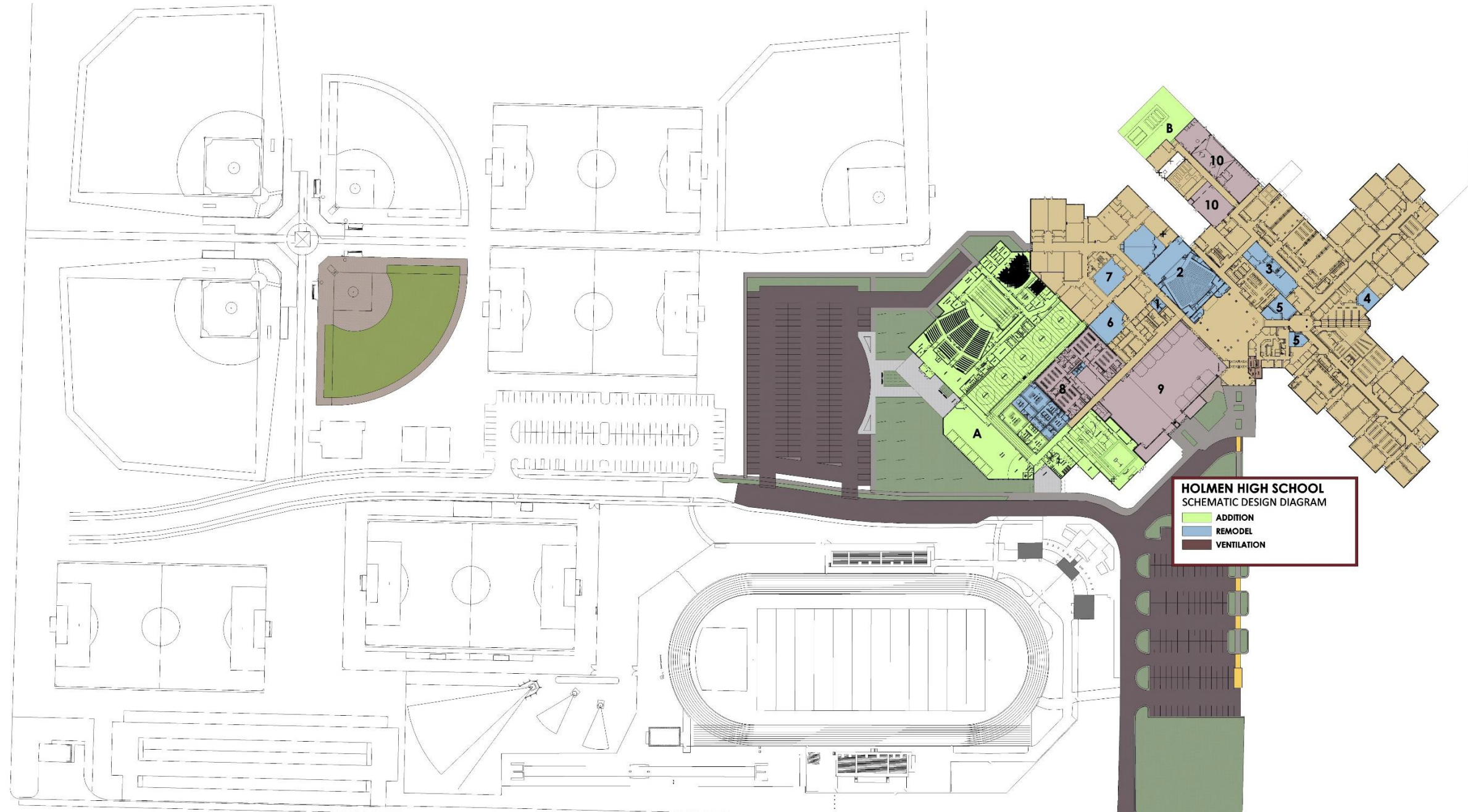


Timeline

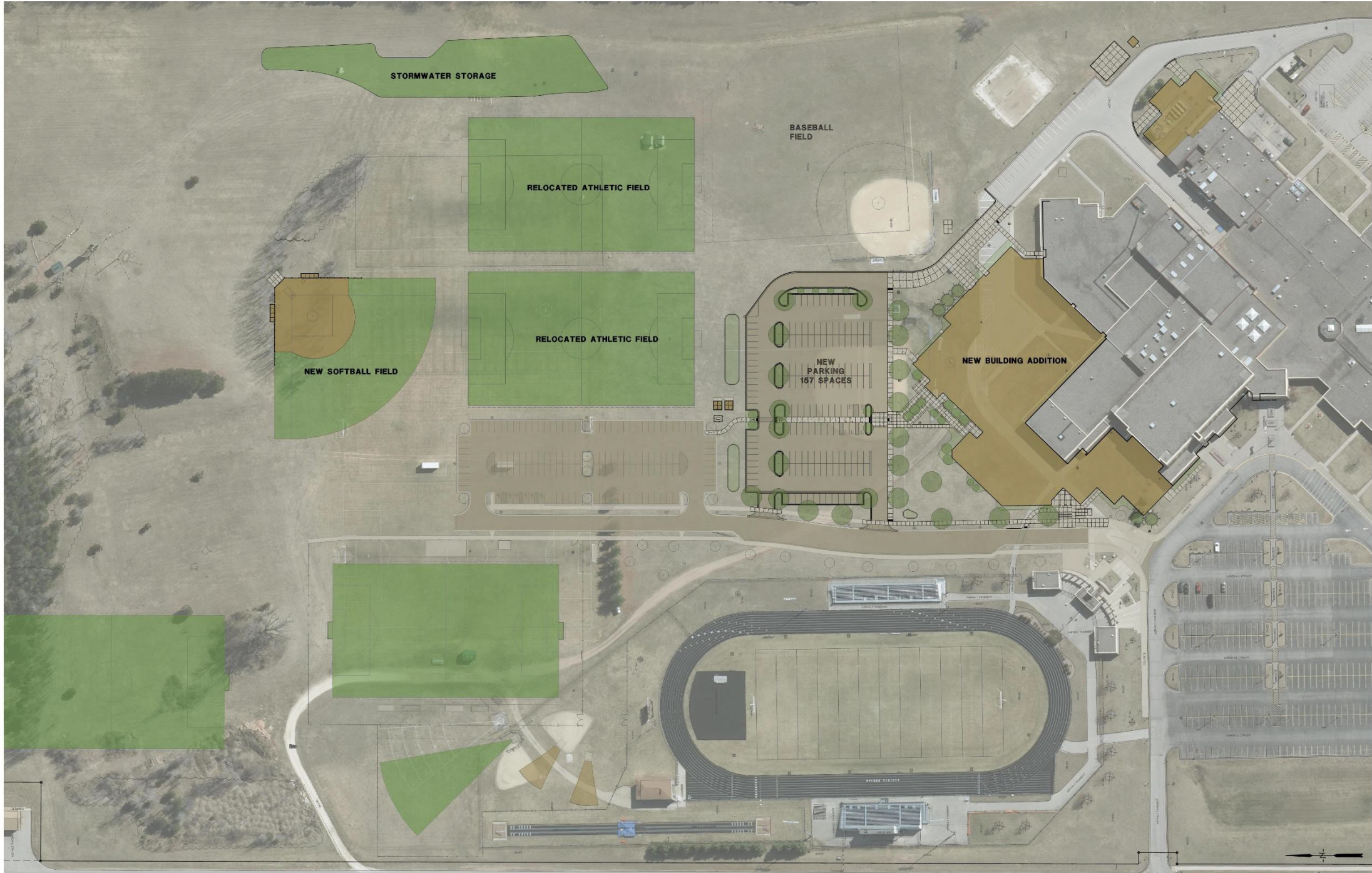
Sitework/Earthwork



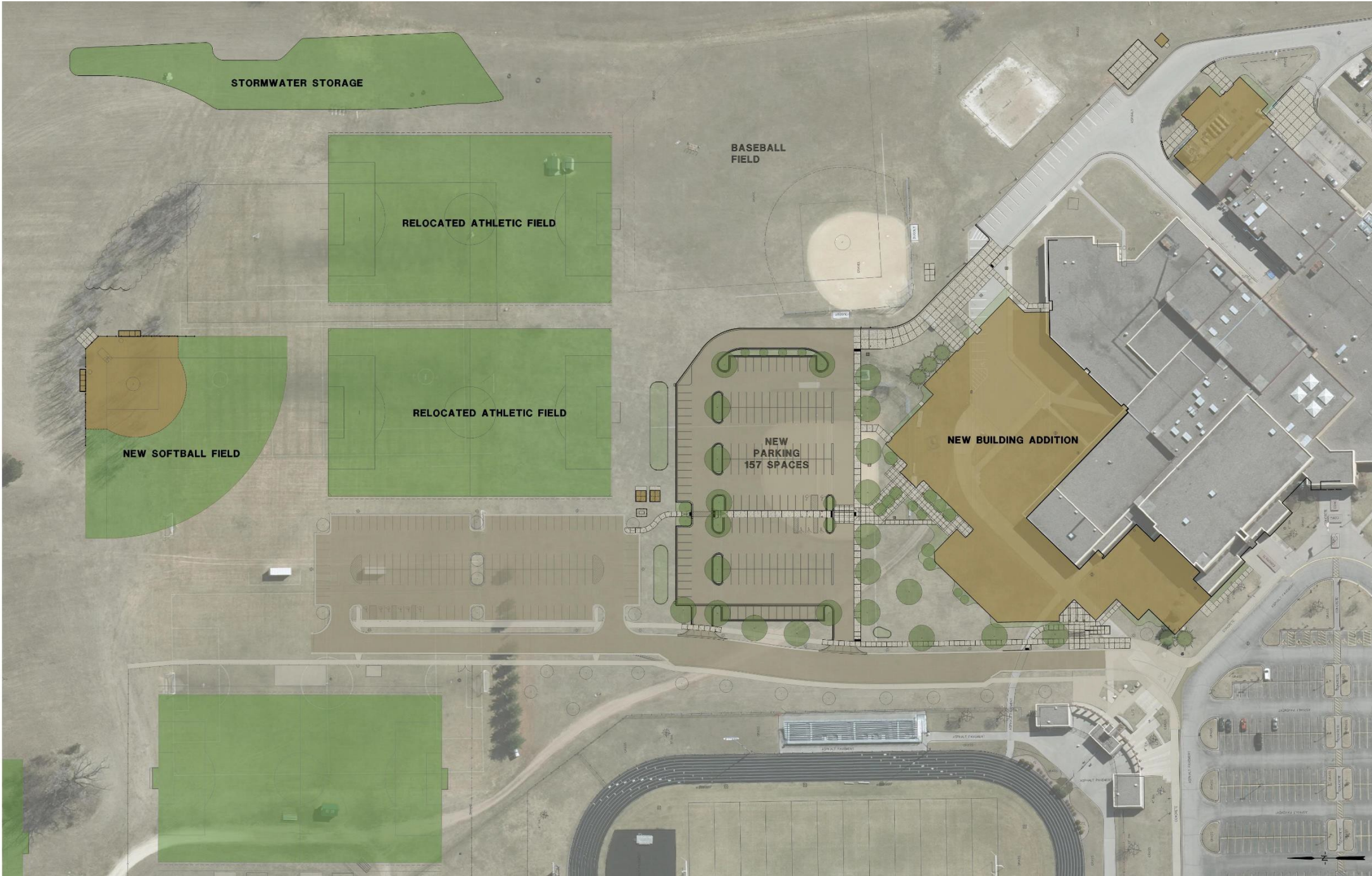
High School Additions & Remodeling



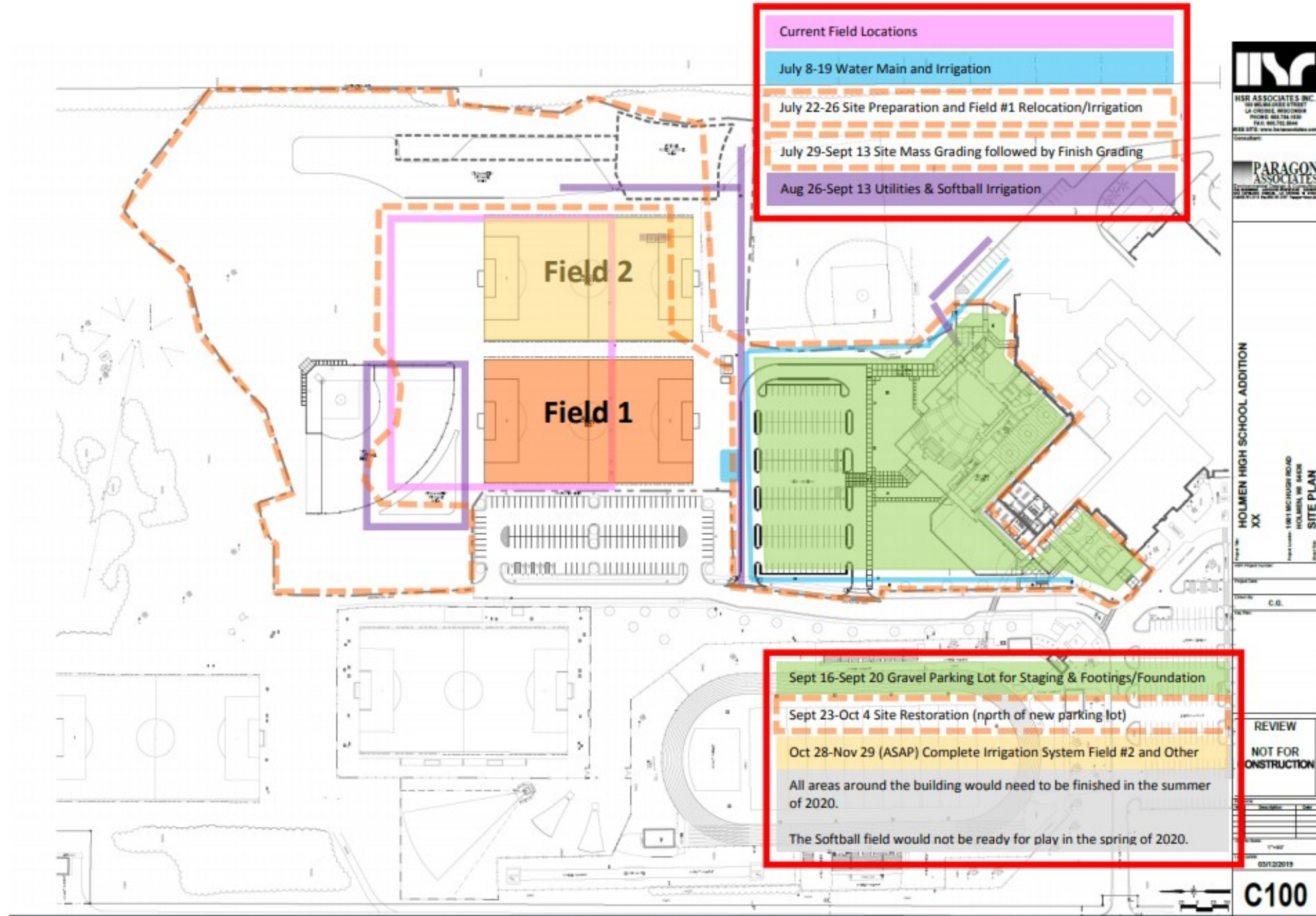
High School Additions & Remodeling



High School Additions & Remodeling



High School Additions & Remodeling



High School Additions & Remodeling

Budget

Phase 1 Addition Sitework		4.2.19			
	Square Footage/Unit/	Unit Price/ Line Item	Unit	Total	
New Parking Lot / Drop-Off		Cubic Yards			
Excavation & Site Preparation	79,820	\$1.50	SF	\$119,730	
New Fill Brought in to Site	7,000	\$10.25	CY	\$71,750	
On-Site Fill moved to New Location	15,000	\$7.25	CY	\$108,750	
Utilities Relocation/Connections Allowance	1	\$45,000	EA	\$45,000	
Replacement Softball Field	1	\$150,000	EA	\$150,000	
SUBTOTAL COST				\$495,230	

Phase 2 Addition Sitework		4.2.19			
	Square Footage/Unit/	Unit Price/ Line Item	Unit	Total	
New Parking Lot / Drop-Off		Cubic Yards			
Asphalt Paving (Drop-off area/ 150 Parking Stalls)	63,000	\$5.00	SF	\$315,000	
Concrete Walks	15,600	\$6.25	SF	\$97,500	
Site Lighting Allowance	1	\$20,000	EA	\$20,000	
Landscape Allowance	1	\$30,000	EA	\$30,000	
New Sod/Seed Allowance	1	\$25,000	EA	\$25,000	
SUBTOTAL COST				\$487,500	

- Two phases of sitework
- Estimated cost



High School Additions & Remodeling

Budget

	Referendum				4.2.19			
	Square Footage/Unit/	Unit Price/ Line Item	Unit	Total	Square Footage/Unit/	Unit Price/ Line Item	Unit	Total
New Parking Lot / Drop-Off	<i>Cubic Yards</i>				<i>Cubic Yards</i>			
Excavation & Site Preparation	71,000	\$1.70	SF	\$120,700	79,820	\$1.50	SF	\$119,730
New Fill Brought in to Site	7,000	\$10.50	CY	\$73,500	7,000	\$10.25	CY	\$71,750
On-Site Fill moved to New Location	15,000	\$7.50	CY	\$112,500	15,000	\$7.25	CY	\$108,750
Utilities Relocation/Connections Allowance	1	\$50,000	EA	\$50,000	1	\$45,000	EA	\$45,000
Asphalt Paving (Drop-off area/ 150 Parking Stalls)	60,000	\$5.25	SF	\$315,000	63,000	\$5.00	SF	\$315,000
Concrete Walks	4,500	\$7.50	SF	\$33,750	15,600	\$6.25	SF	\$97,500
Site Lighting Allowance	1	\$20,000	EA	\$20,000	1	\$20,000	EA	\$20,000
Replacement Softball Field	1	\$150,000	EA	\$150,000	1	\$150,000	EA	\$150,000
Landscape Allowance	1	\$40,000	EA	\$40,000	1	\$30,000	EA	\$30,000
New Sod/Seed Allowance	1	\$25,000	EA	\$25,000	1	\$25,000	EA	\$25,000
SUBTOTAL COST				\$940,450				\$982,730

- Estimated overall sitework cost
- Cost more or less
- Referendum \$940,450, projected \$982,730.



High School Additions & Remodeling

Questions



High School Additions & Remodeling

