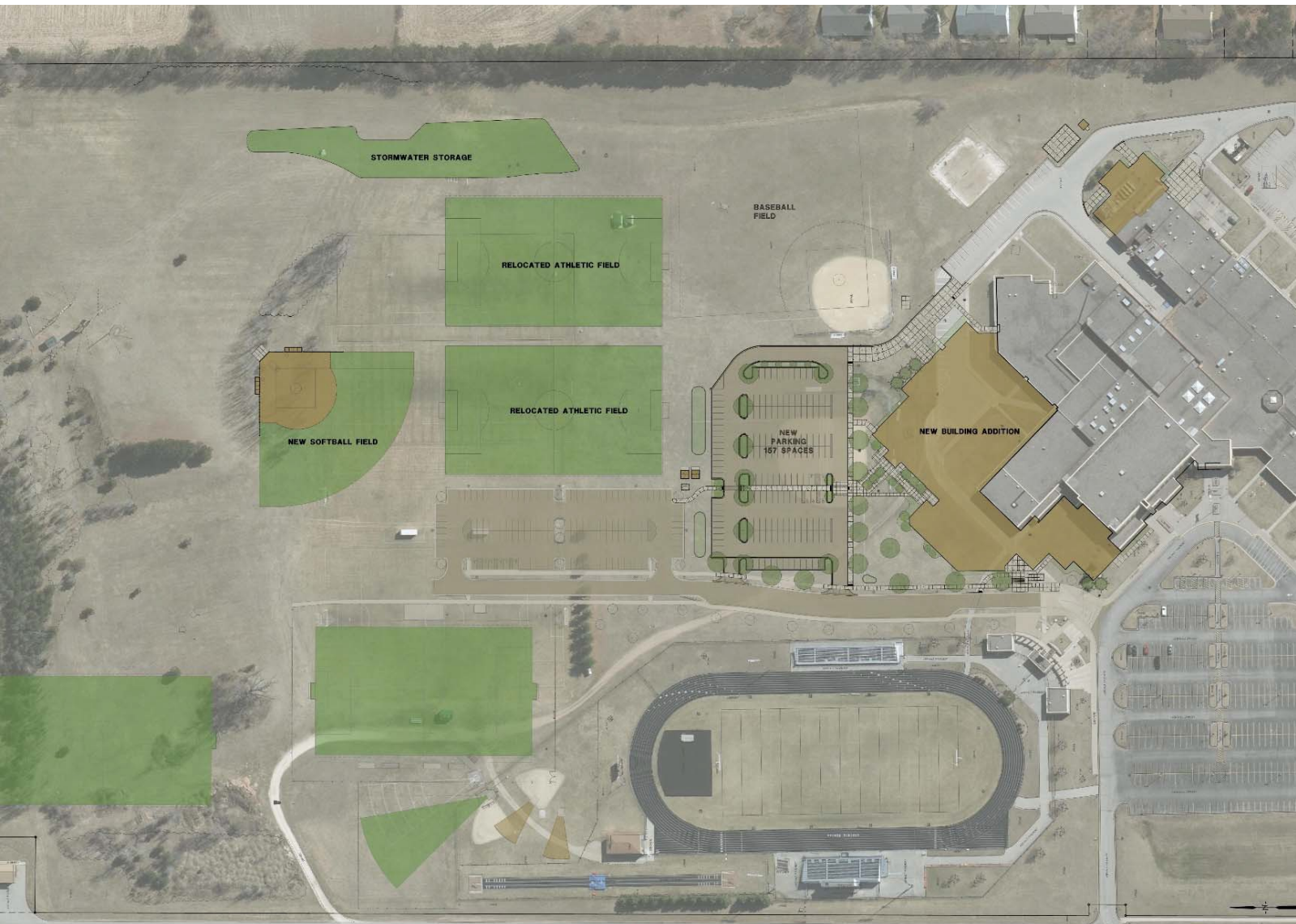


SPAR Approval – Holmen High School Addition

School District of Holmen
Holmen, Wisconsin

Village of Holmen
Holmen, Wisconsin

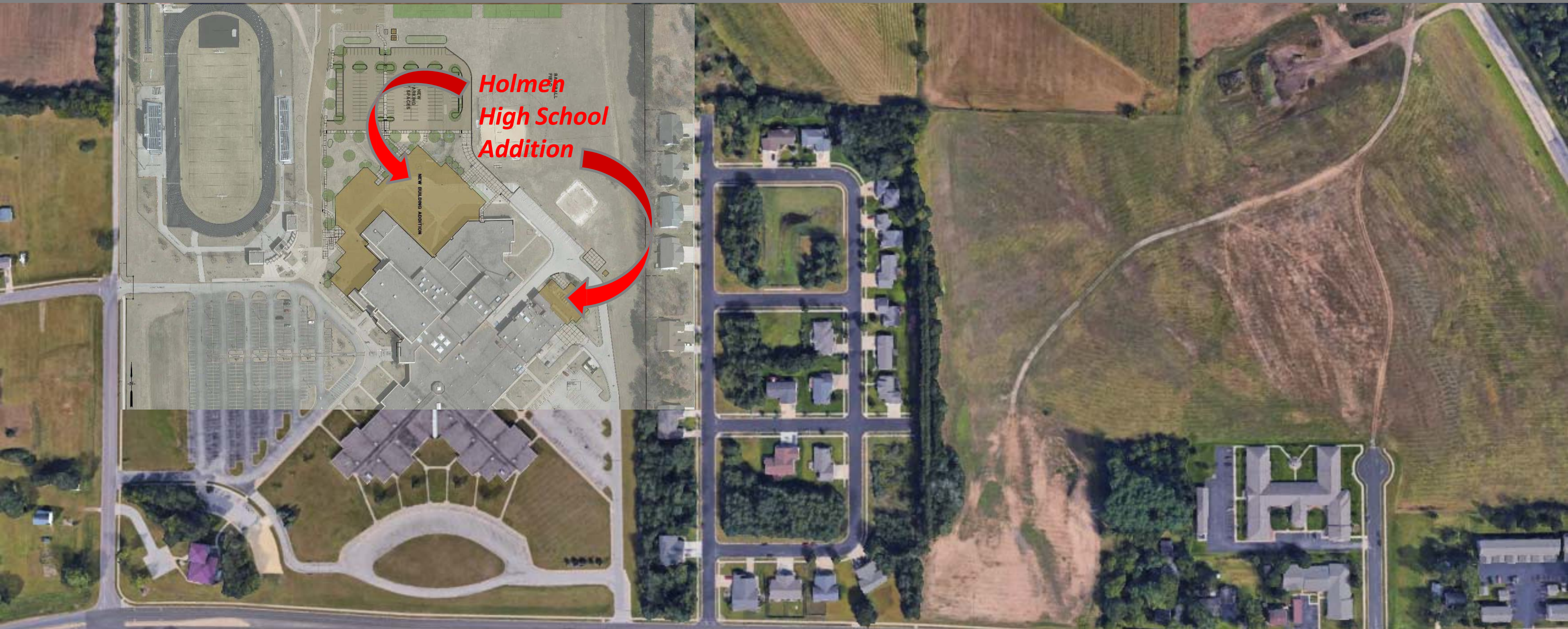
6.11.19



Holmen High School Addition



Overview- Site Plan

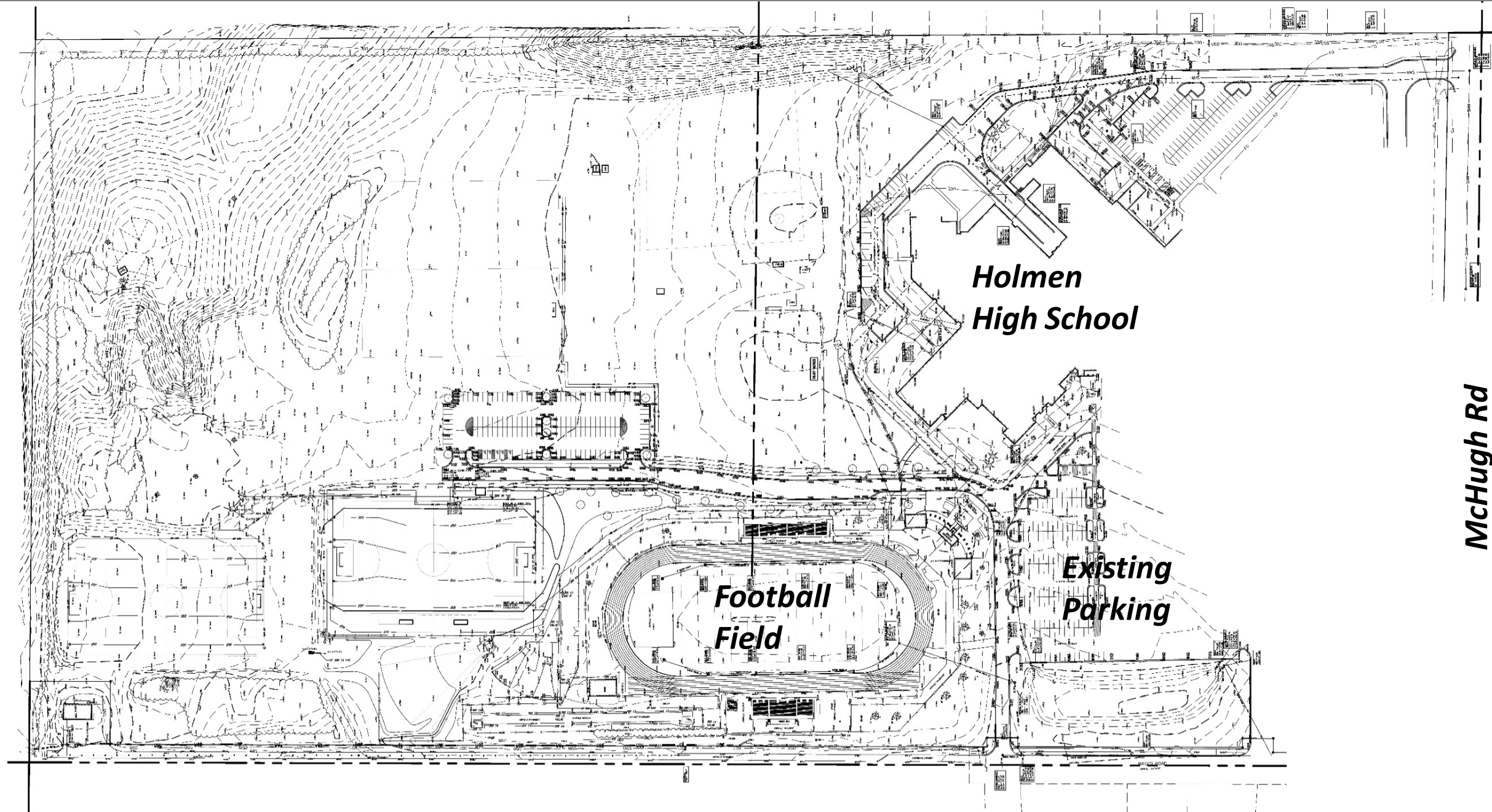


Holmen High School Addition

McHugh Rd

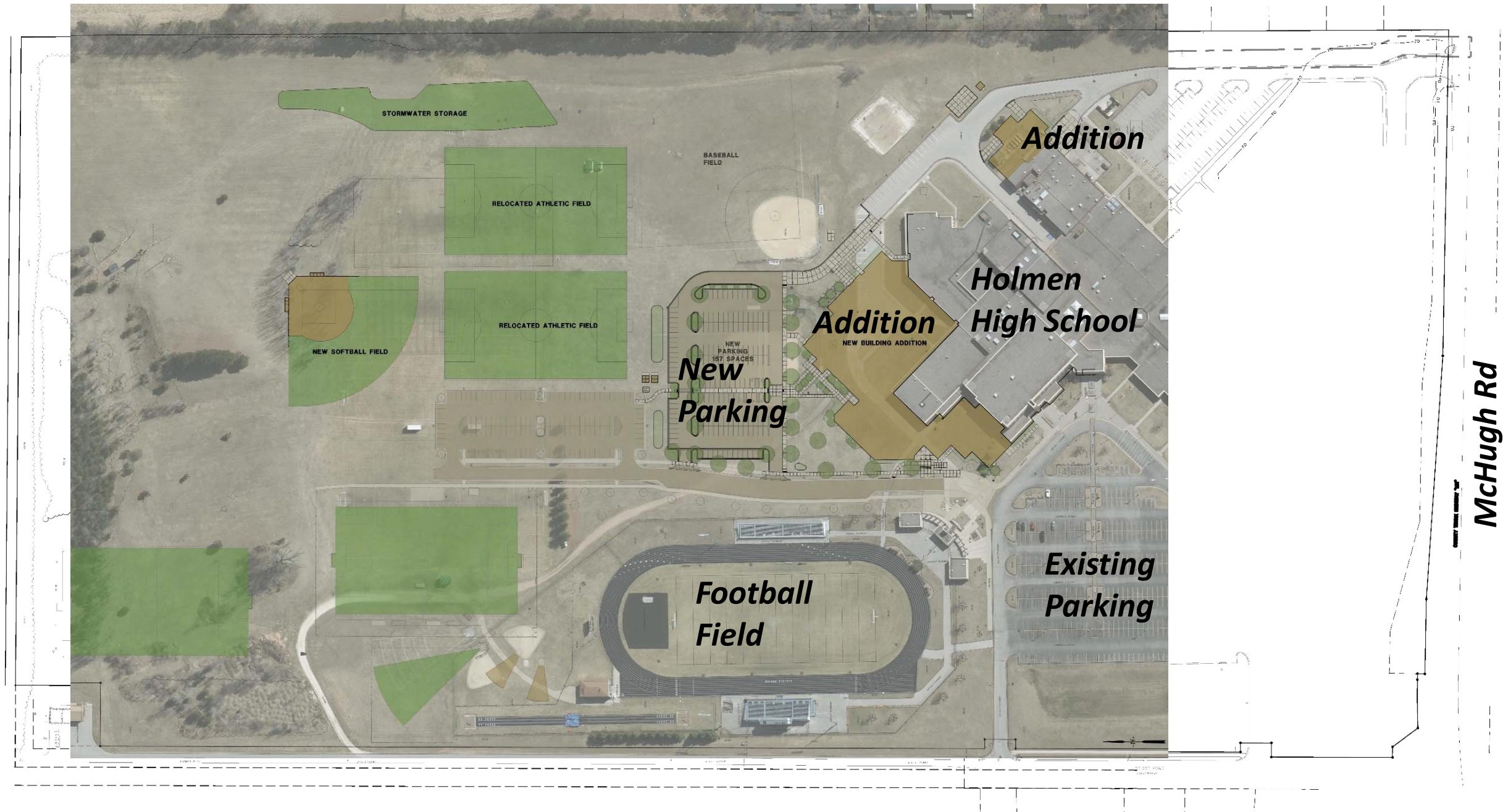
Holmen High School Addition





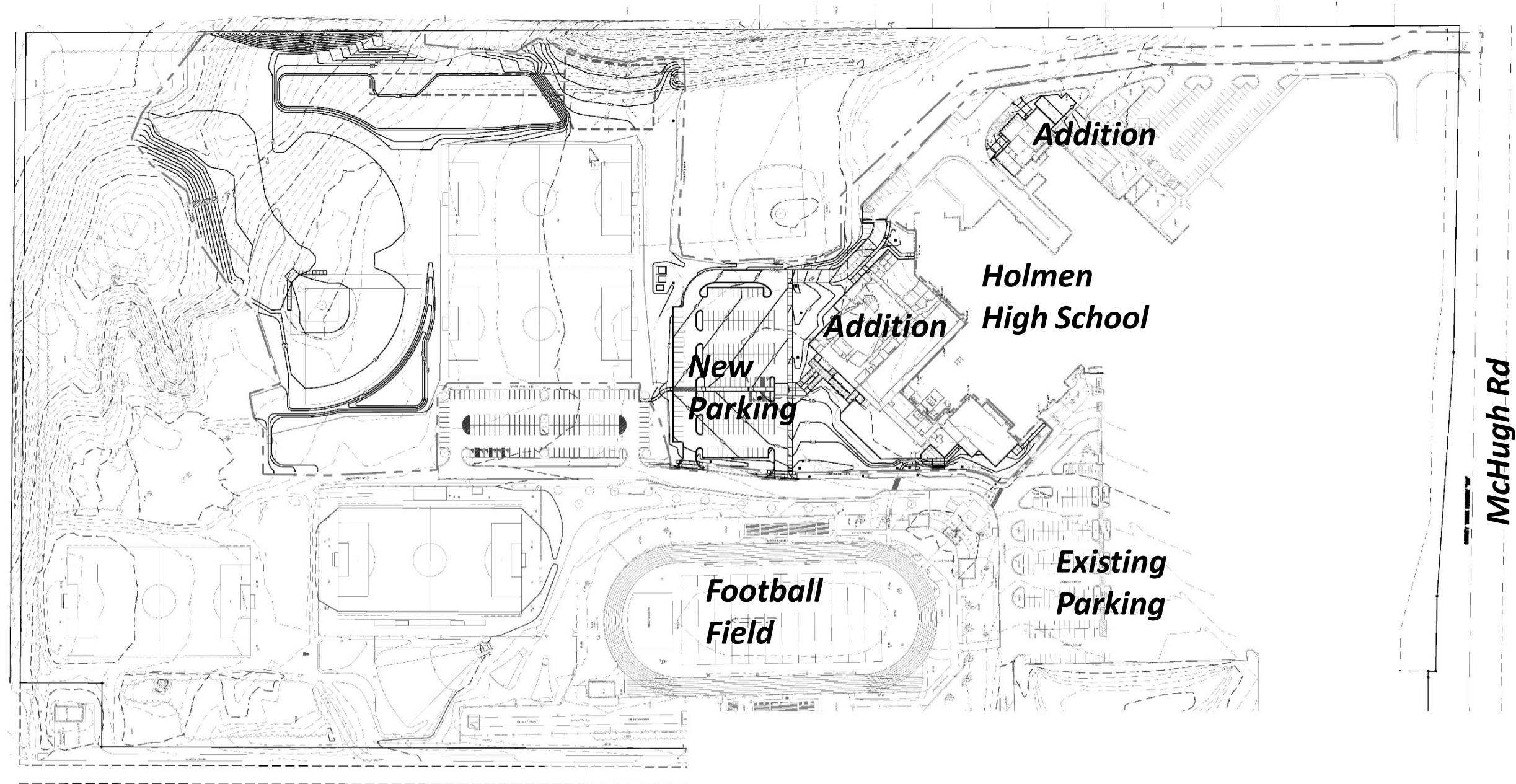
Holmen High School Addition

Overall Site Layout



Holmen High School Addition

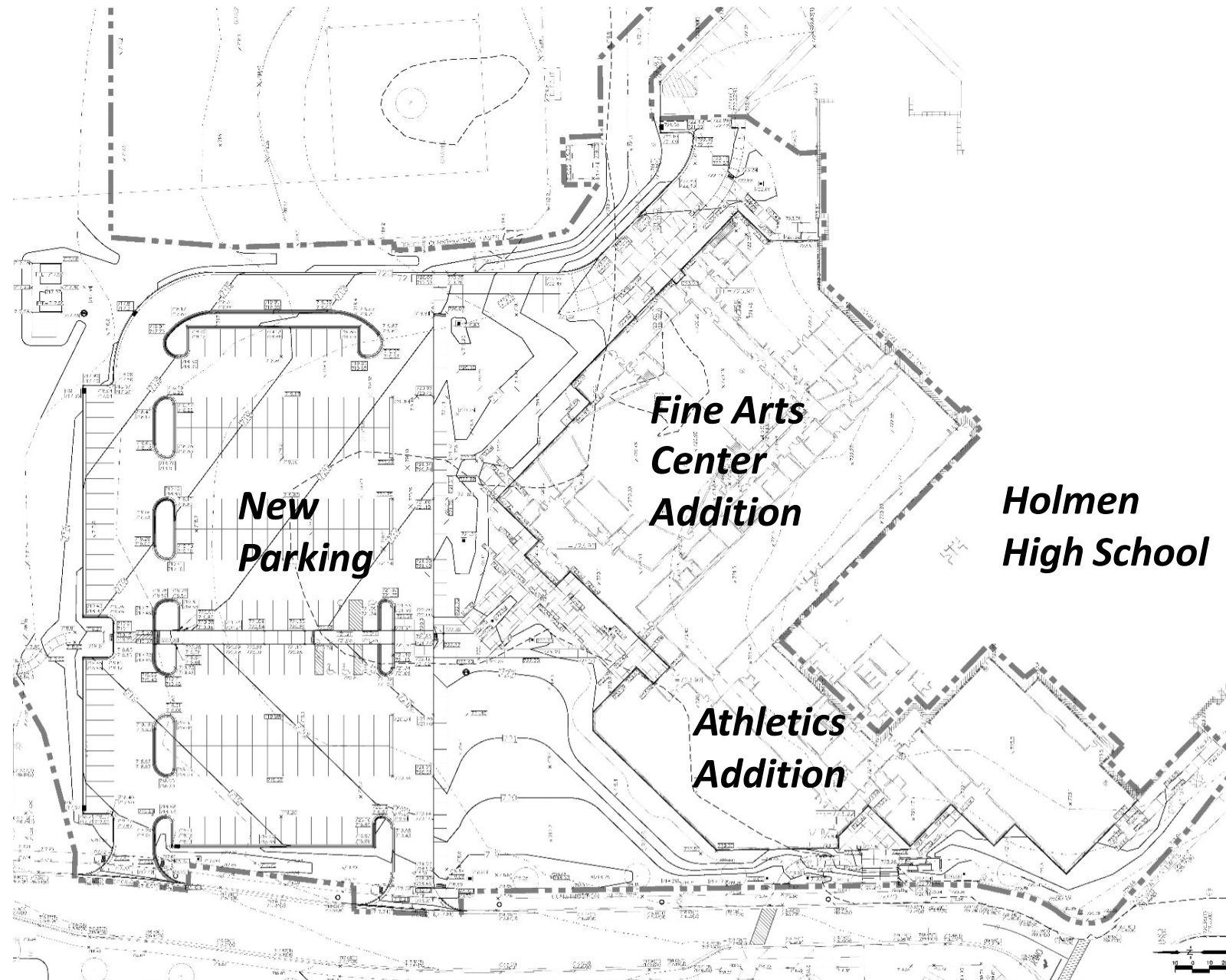
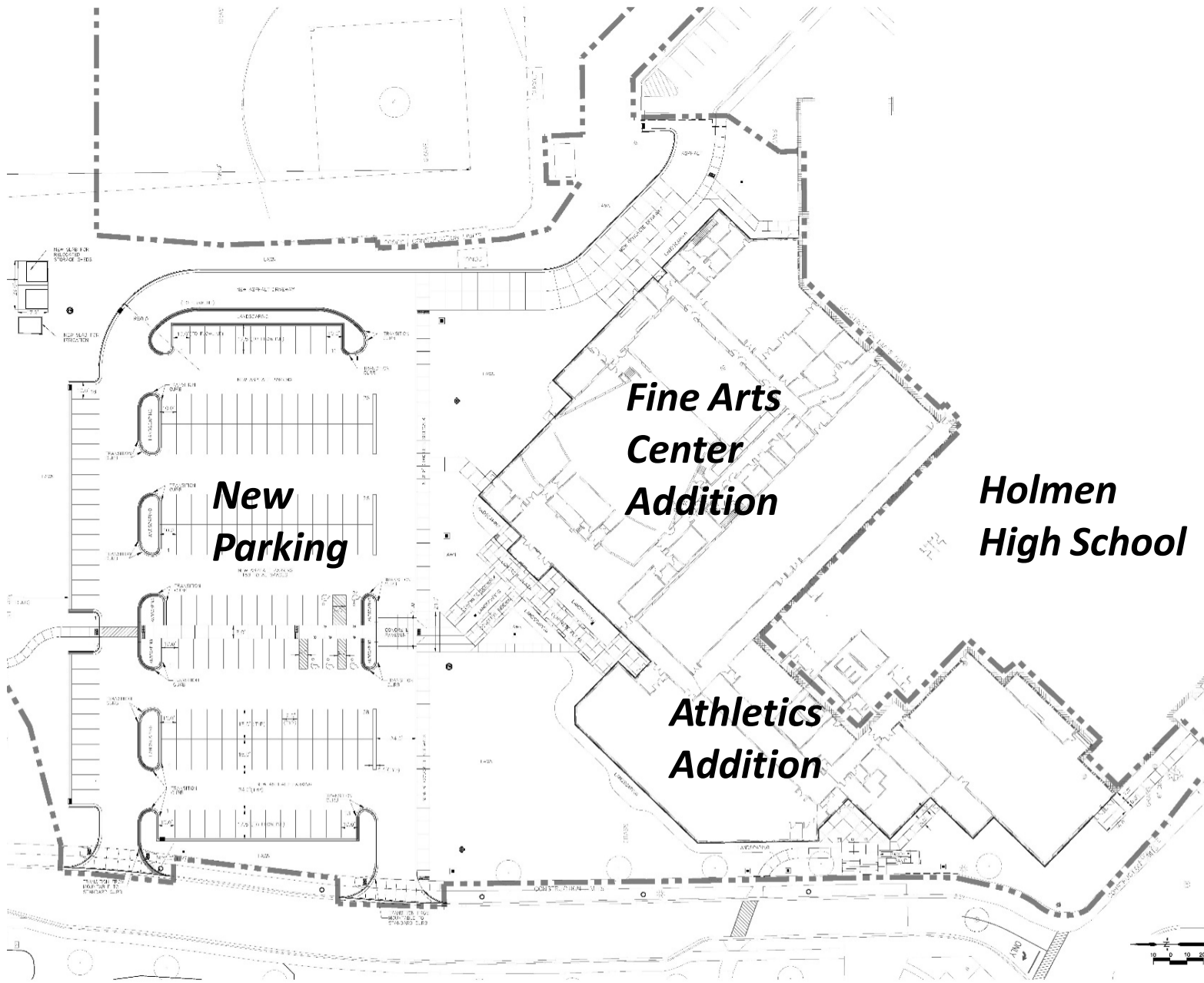
Overall Site Grading



Holmen High School Addition

Site Layout

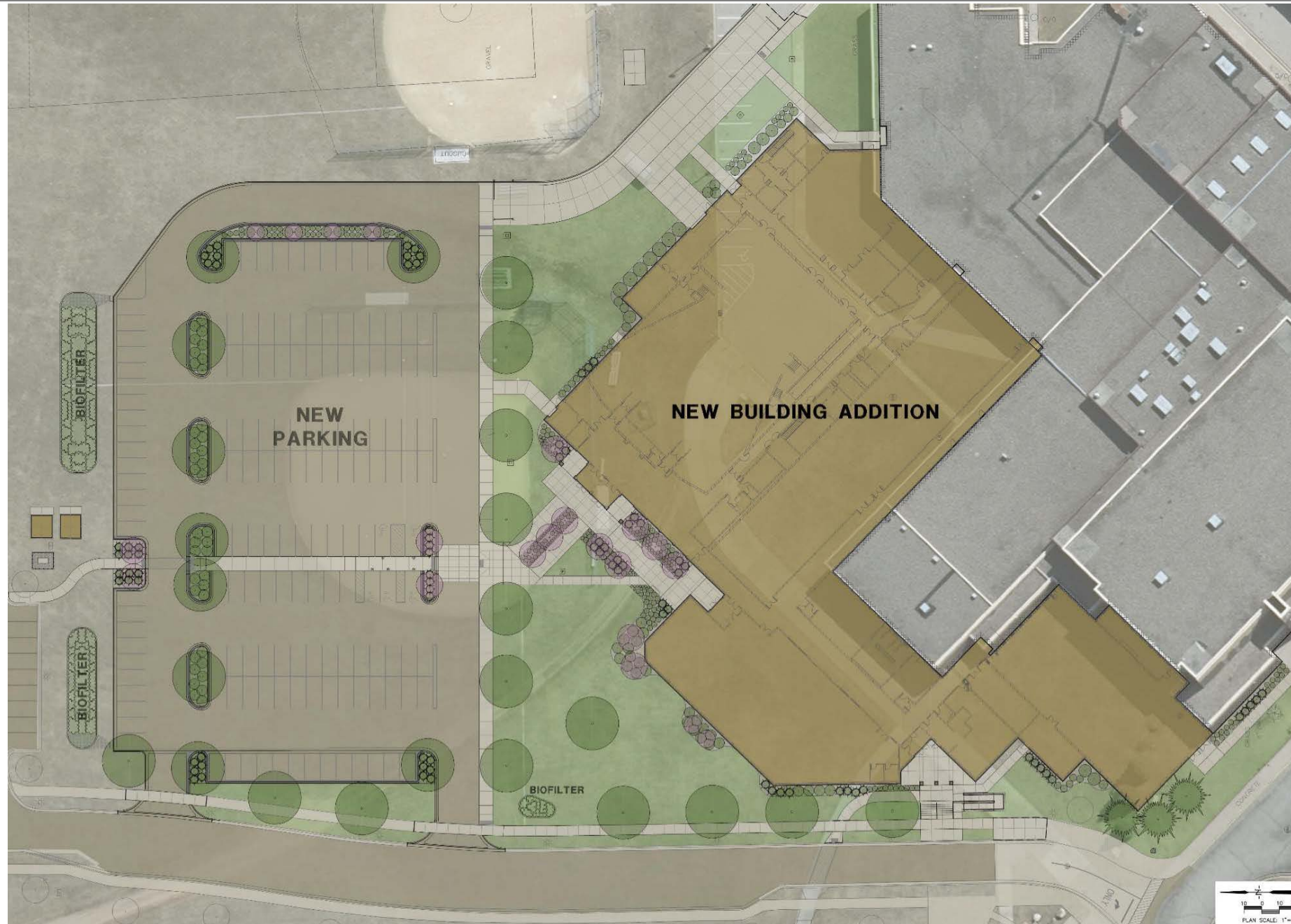
Site Grading



Holmen High School Addition



Landscape Plan

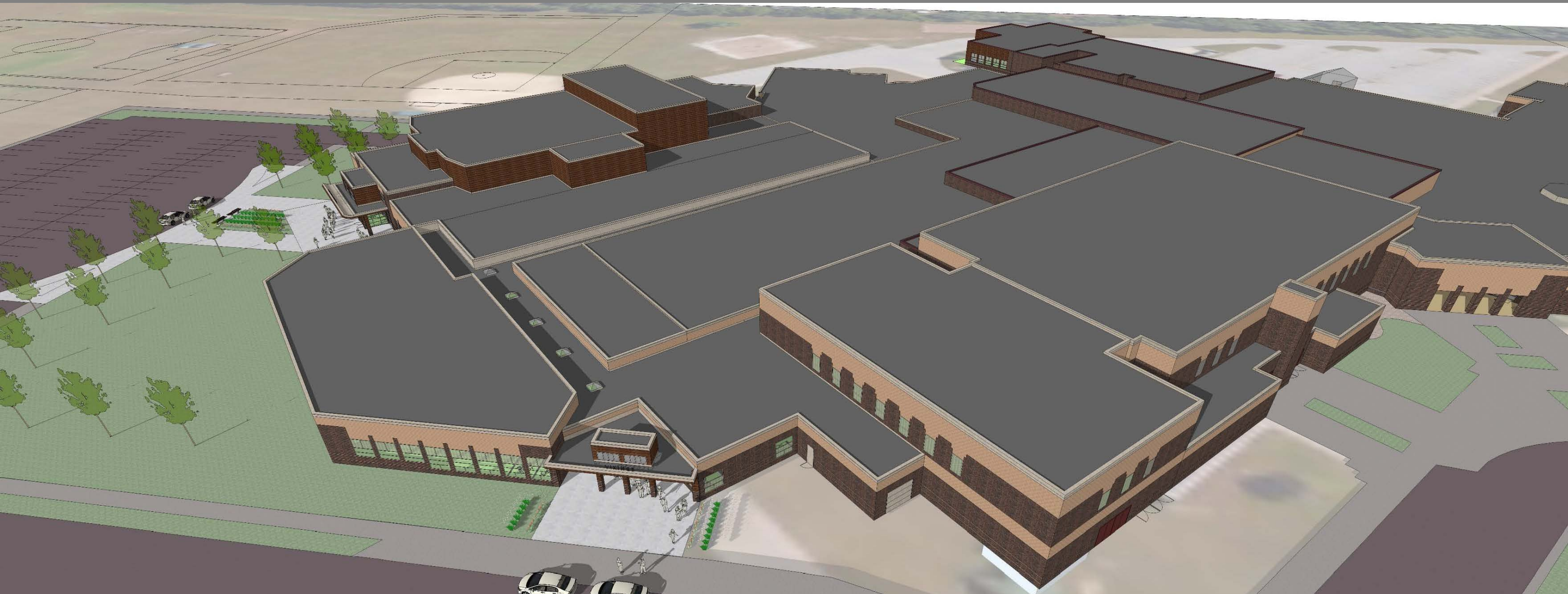


- ***Landscaping at Performing Arts entrance as a major feature***
- ***Foundation plantings around addition***
- ***Additional street trees along McHugh Road and Briggs Road***
- ***Bioinfiltration plantings north of parking lot for storm water quality***
- ***Complete landscape plans including plant lists, details and requirements checklist provided to Village Administrator***



Holmen High School Addition

Exterior Views



Aerial View from West



Holmen High School Addition



Exterior Views



Aerial View from North



Holmen High School Addition



Exterior Views



Sidewalk View to West Athletic Entrance



Holmen High School Addition



Exterior Views



Sidewalk View to North Fine Arts Center Entrance



Holmen High School Addition



Exterior Views



Aerial View from North of Tech Ed Addition



Holmen High School Addition



Exterior Views



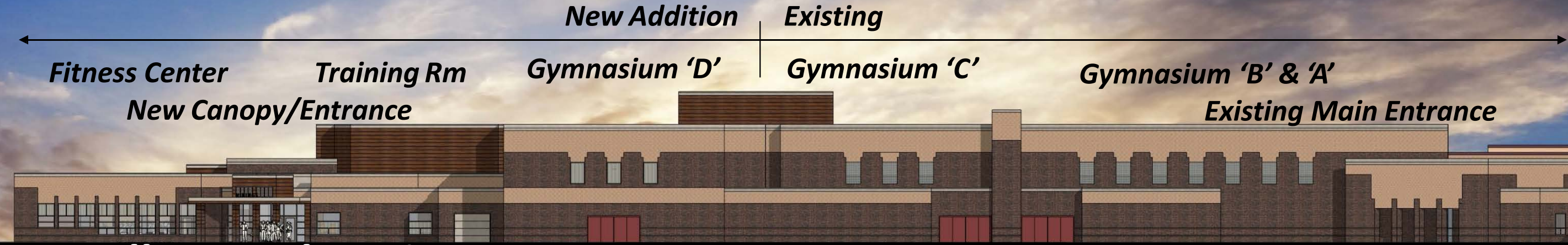
Aerial View from East of Tech Ed Addition



Holmen High School Addition



Elevation Views



Overall West Elevation



West Elevation



Holmen High School Addition



Elevation Views



Holmen High School Addition



Elevation Views



Holmen High School Addition



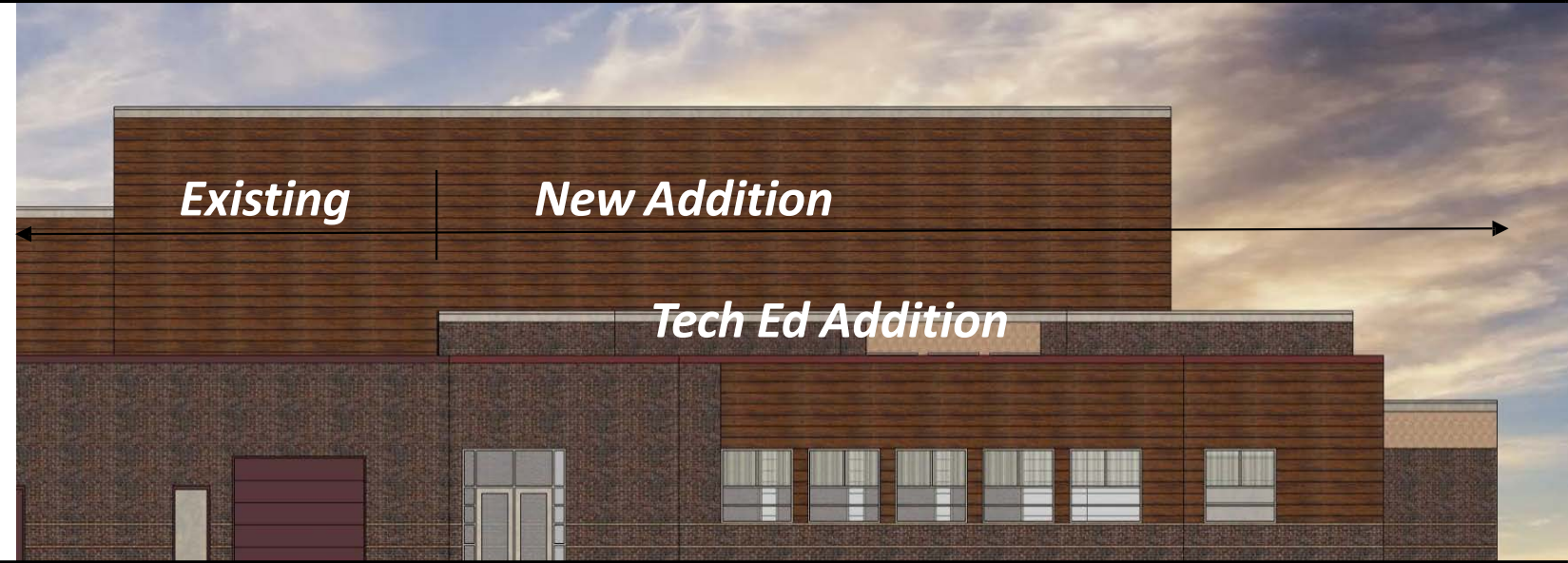
Elevation Views



Overall East Elevation



East Elevation – Tech Ed Addition



South Elevation – Tech Ed Addition

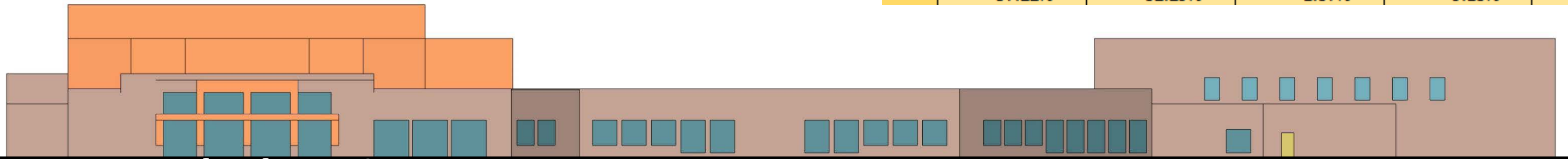


Holmen High School Addition

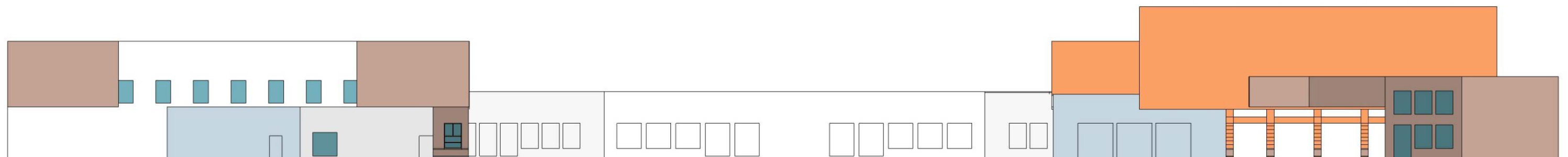


Elevation Material % - FAC/Ath

	Brick Veneer	Rusted Metal Panels	Metal Doors	Glass	Totals
South	2370 SF 42.86%	2892 SF 52.30%	0 SF 0.00%	268 SF 4.85%	5530 SF 100.00%
North	7210 SF 62.85%	2583 SF 22.52%	51 SF 0.44%	1627 SF 14.18%	11471 SF 100.00%
West	4493 SF 57.45%	2406 SF 30.76%	186 SF 2.38%	736 SF 9.41%	7821 SF 100.00%
East	5395 SF 58.62%	3105 SF 33.74%	229 SF 2.49%	475 SF 5.16%	9204 SF 100.00%
Totals	19468 SF 57.22%	10986 SF 32.29%	466 SF 1.37%	3106 SF 9.13%	34026 SF 100.00%



North Elevation



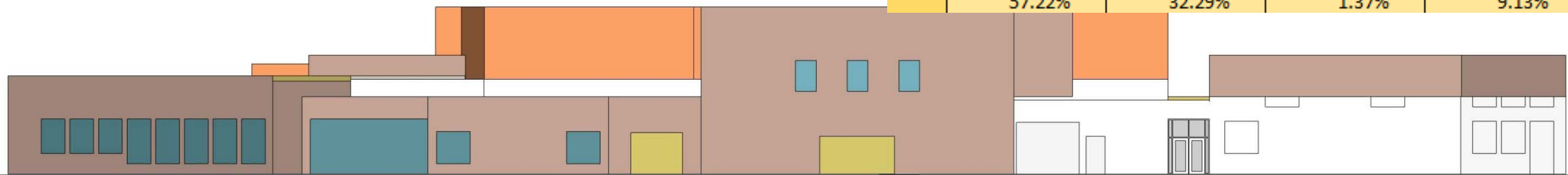
South Elevation



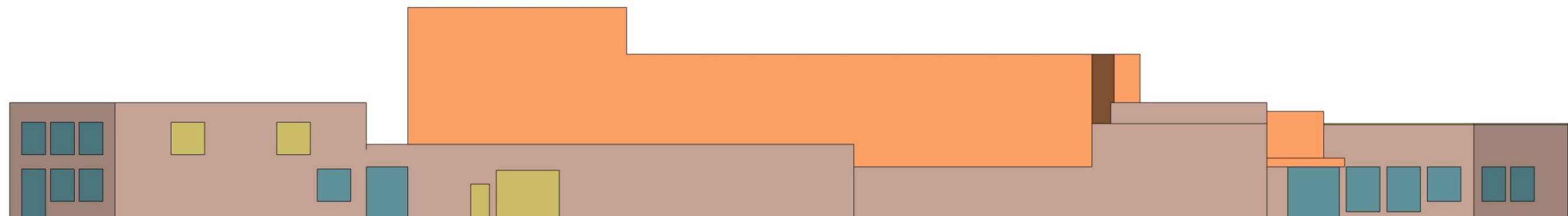
Holmen High School Addition

Elevation Material % - FAC/Ath

	Brick Veneer	Rusted Metal Panels	Metal Doors	Glass	Totals
South	2370 SF 42.86%	2892 SF 52.30%	0 SF 0.00%	268 SF 4.85%	5530 SF 100.00%
North	7210 SF 62.85%	2583 SF 22.52%	51 SF 0.44%	1627 SF 14.18%	11471 SF 100.00%
West	4493 SF 57.45%	2406 SF 30.76%	186 SF 2.38%	736 SF 9.41%	7821 SF 100.00%
East	5395 SF 58.62%	3105 SF 33.74%	229 SF 2.49%	475 SF 5.16%	9204 SF 100.00%
Totals	19468 SF 57.22%	10986 SF 32.29%	466 SF 1.37%	3106 SF 9.13%	34026 SF 100.00%



West Elevation



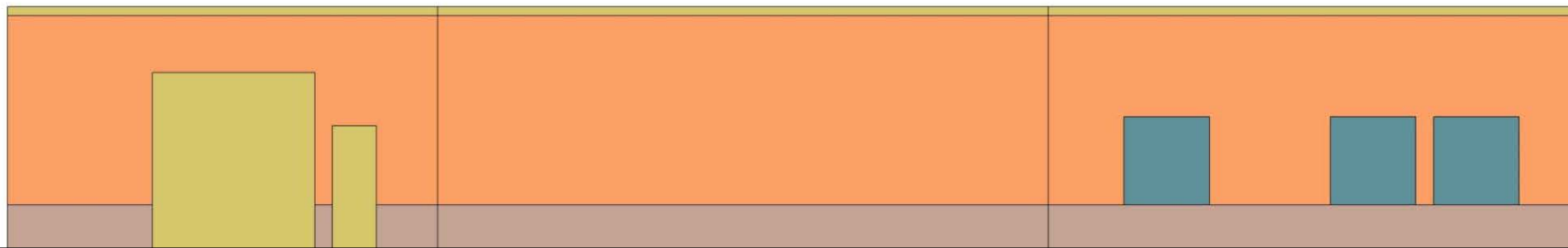
East Elevation



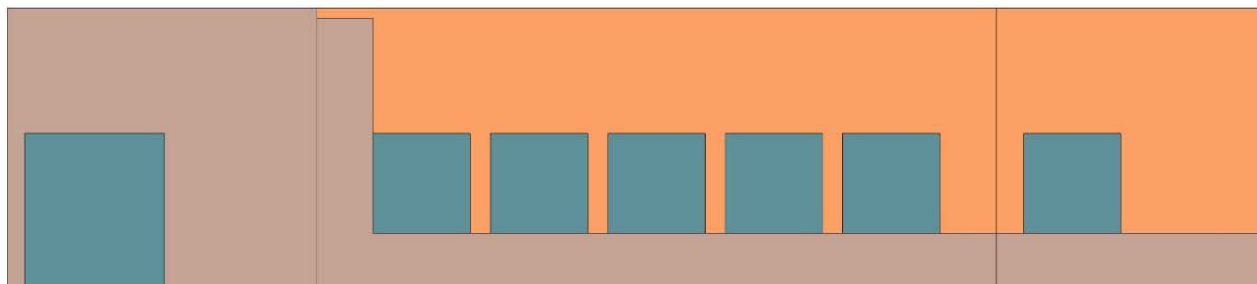
Holmen High School Addition

Elevation Material % - Tech Ed

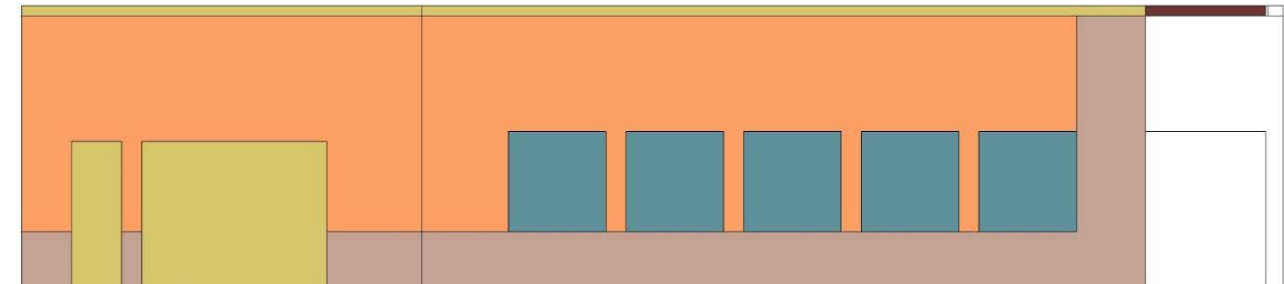
	Brick Veneer	Rusted Metal Panels	Metal Doors	Glass	Totals
East	269 SF 12.68%	1517 SF 71.52%	205 SF 9.67%	130 SF 6.13%	2121 SF 100.00%
North	302 SF 21.24%	746 SF 52.46%	157 SF 11.04%	217 SF 15.26%	1422 SF 100.00%
South	600 SF 37.59%	636 SF 39.85%	0 SF 0.00%	360 SF 22.56%	1596 SF 100.00%
Totals	1171 SF 22.79%	2899 SF 56.41%	362 SF 7.04%	707 SF 13.76%	5139 SF 100.00%



East Elevation



South Elevation

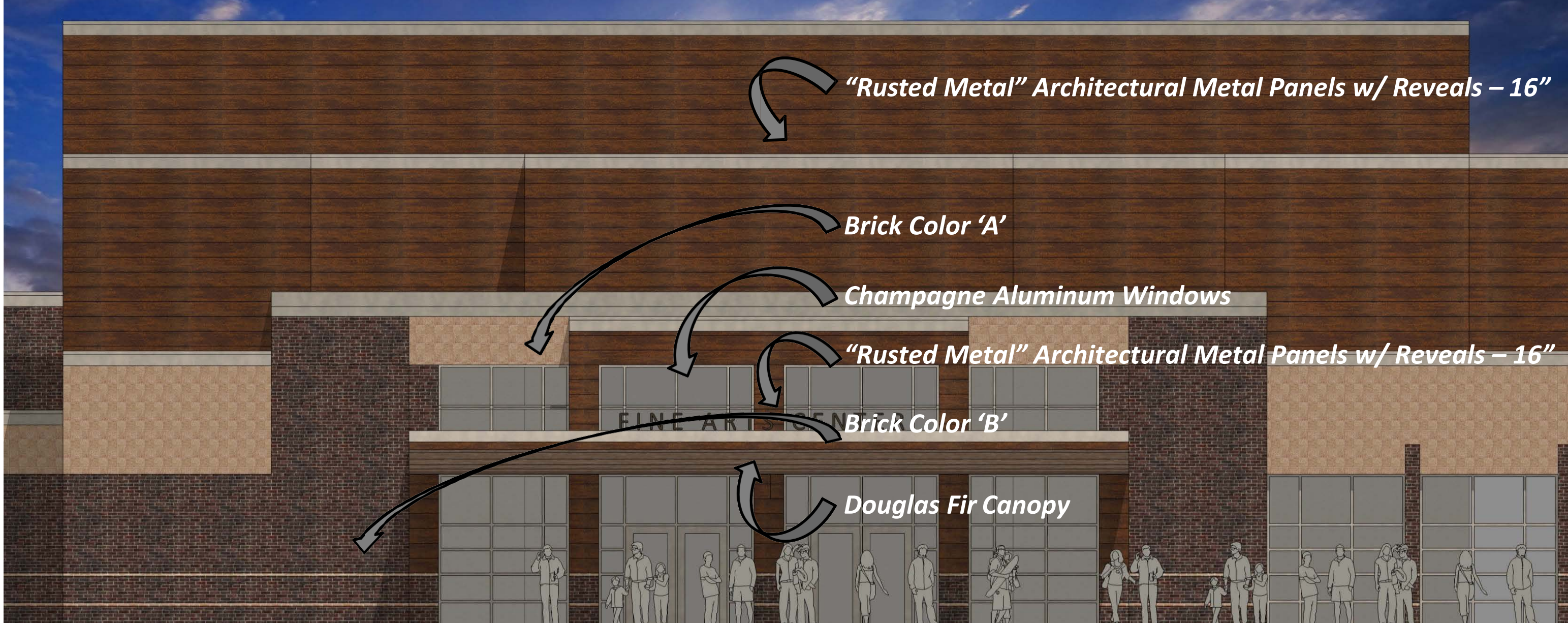


North Elevation



Holmen High School Addition

Materials



South Elevation - closeup



Holmen High School Addition



Materials



Material Samples

Holmen High School Addition



Material Examples

- *Brick Veneer*
- *Champagne Aluminum Windows*



Holmen High School



Holmen High School Addition

Material Examples

- Architectural Metal Panels w/ Reveals
- Architectural Pre-Stone Stone Veneer
- Brick Masonry



Western Technical College Integrated Technology Center



Holmen High School Addition



Material Examples

- Architectural Metal Panels w/ Reveals
- Architectural Pre-Stone Stone Veneer
- Brick Masonry



Coleman Center
Western Technical College



Urban Agricultural Center



Holmen High School Addition

Exterior Lighting

Outdoor

WALK WAY AND PEDESTRIAN



Light Bollards



Pedestrian Pole Lights



- **Parking Lot Lighting** – 20 feet tall – LED – full cutoff fixtures - no light trespassing
- **Light Bollards** - by Main Entrance Walk – LED
- **Pedestrian Pole Lights** - near Main Entrance Walk - 10 feet tall - LED – full cutoff fixtures



Outdoor

ENTRY CANOPY AND WALL MOUNT



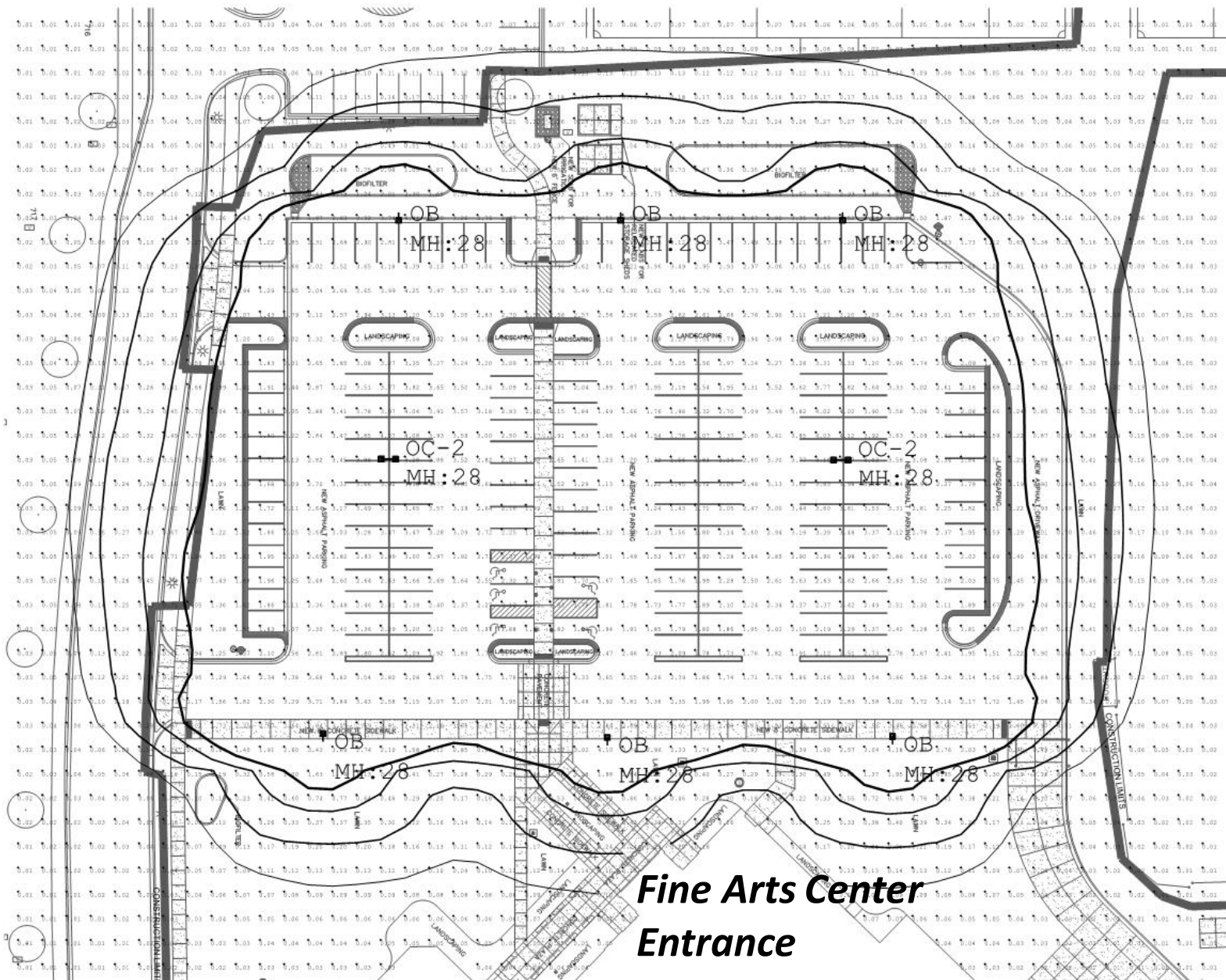
Wall Lights on Building



- **Wall Lights on Building** – LED – full cutoff fixtures - “night sky” friendly

Holmen High School Addition

Site Lighting Plan



Fine Arts Center
Entrance
Lighting Plan

Luminaire Schedule				
QTY	TYPE	MFR	PART NUMBER	LLF
6	OB	McGraw-Edison	GLEON-AF-04-LED-480-T4FT-BZ + SSS4A25SFN1-AB1-TMP1 + 3' BASE	0.900
2	OC-2	McGraw-Edison	(2) GLEON-AF-04-LED-480-5WQ-BZ + SSS4A25SFN1-AB1-TMP1 + 3' BASE	0.900

Calculation Summary					
AREA	AVG	MAX	MIN	AVG/MIN	MAX/MIN
Parking Area	2.67	4.5	1.1	2.43	4.09

SPECIFICATION FEATURES

Construction
Extruded aluminum driver enclosure thermally isolated from Light Squares for optimal thermal performance. Heavy-wall, die-cast aluminum end caps enclose housing and die-cast aluminum heat sinks. A unique, patent pending interlocking housing and heat sink provides scalability with superior structural rigidity. 3G vibration tested and rated. Optional tool-less hardware available for ease of entry into electrical chamber. Housing is IP66 rated.

Optics
Patented, high-efficiency injection-molded AccuLED Optics technology. Optics are precisely designed to shape the distribution maximizing efficiency and application spacing. AccuLED Optics create consistent distributions with the scalability to meet customized application requirements. Offered standard in 4000K (+/- 275K) CCT 70 CRI. Optional 3000K, 5000K and 6000K CCT.

Electrical
LED drivers are mounted to removable tray assembly for ease of maintenance. 120-277V 50/60Hz, 347V 60Hz or 480V 60Hz operation. 480V is compatible for use with 480V Wye systems only. Standard with 0-10V dimming. Shipped standard with Eaton proprietary circuit module designed to withstand 10kV of transient line surge. The Galleon LED luminaire is suitable for operation in -40°C to 40°C ambient environments. For applications with ambient temperatures exceeding 40°C, specify the HA (High Ambient) option. Light Squares are IP66 rated. Greater than 90% lumen maintenance expected at 60,000 hours. Available in standard 1A drive current and optional 600mA, 800mA and 1200mA drive currents (nominal).

Mounting
STANDARD ARM MOUNT: Extruded aluminum arm includes internal bolt guides allowing for easy positioning of fixture during mounting. When mounting two or more luminaires at 90° and 120° apart, the EA extended arm may be required. Refer to the

arm mounting requirement table. Round pole adapter included. For wall mounting, specify wall mount bracket option. **QUICK MOUNT ARM:** Adapter is bolted directly to the pole. Quick mount arm slide into place on the adapter and is secured via two screws, facilitating quick and easy installation. The versatile, patent pending, quick mount arm accommodates multiple drill patterns ranging from 1-1/2" to 4-7/8". Removal of the door on the quick mount arm enables wiring of the fixture without having to access the driver compartment. A knock-out enables round pole mounting.

Finish
Housing finished in super durable TGIC polyester powder coat paint, 2.5 mil nominal thickness for superior protection against fade and wear. Heat sink is powder coated black. Standard housing colors include black, bronze, grey, white, dark platinum and graphite metallic. RAL and custom color matches available.

Warranty
Five-year warranty.



GLEON
GALLEON LED

1-10 Light Squares
Solid State LED

AREA/SITE LUMINAIRE

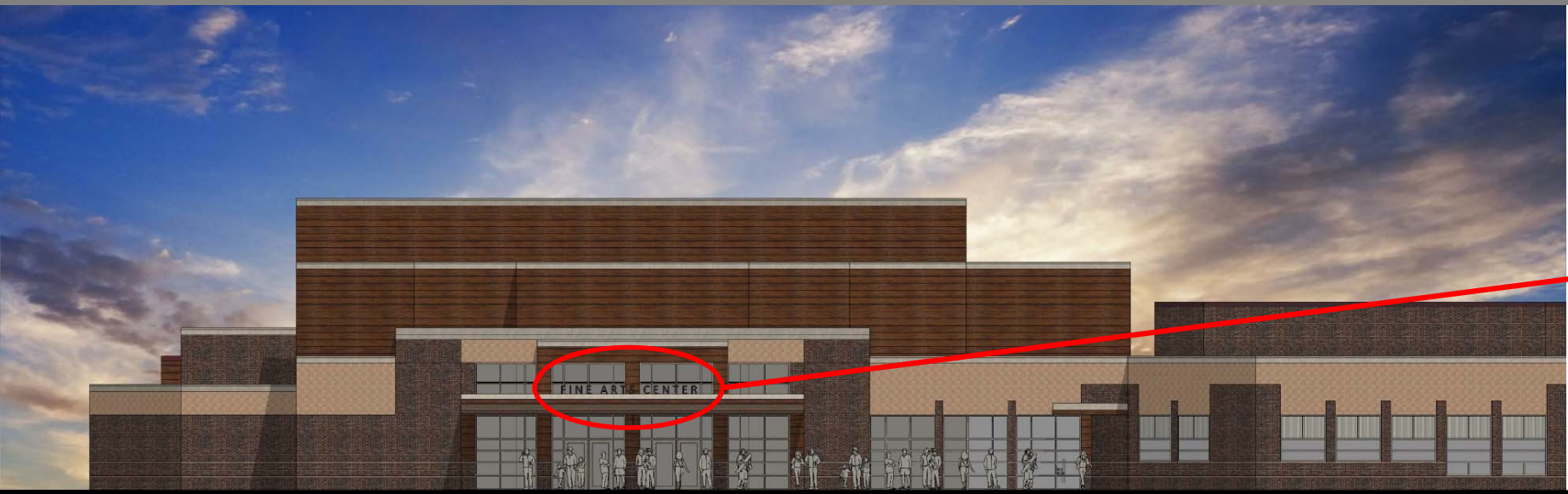


Fixtures



Holmen High School Addition

Signage



North Elevation – Canopy Letters Sign Placement – FINE ARTS CENTER



West Elevation – Canopy Letters Sign Placement – VIKINGS



Holmen High School Addition

